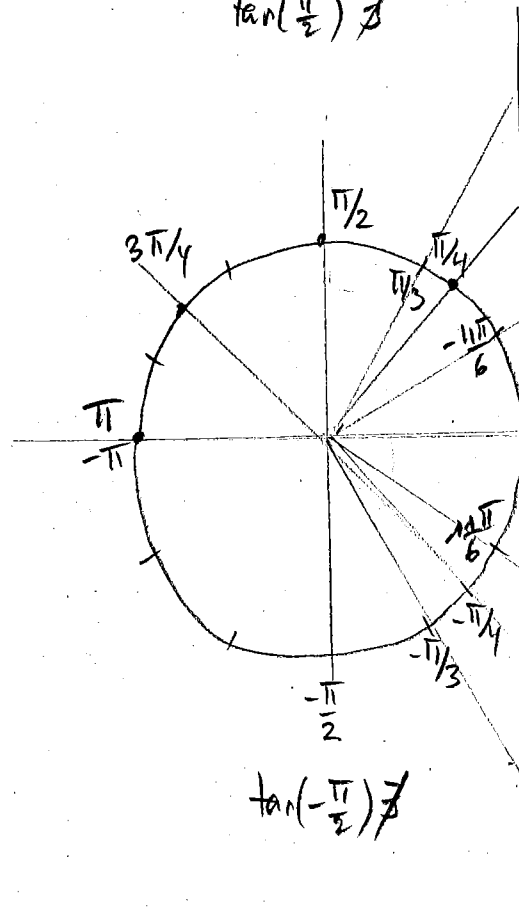


Act 6 [2]

$\tan(\frac{\pi}{2})$ ~~is not defined~~



$\tan(\frac{\pi}{3}) = \sqrt{3} \approx 1,73$

$\tan(\frac{\pi}{4}) = 1$

$\tan(-\frac{\pi}{6}) = -\frac{\sqrt{3}}{3} \approx -0,58$

$\tan(\pi) = \tan(-\pi) = 0$

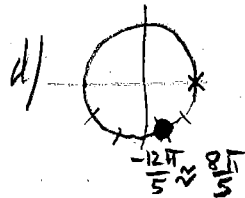
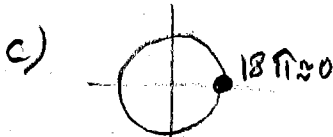
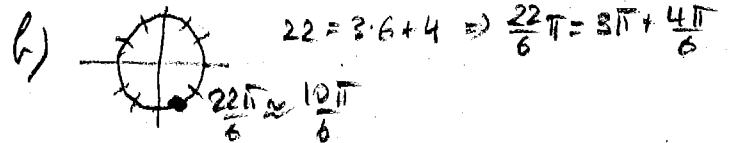
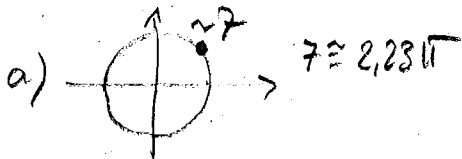
$\tan(-\frac{\pi}{6}) = -\frac{\sqrt{3}}{3} \approx -0,58$

$\tan(-\frac{\pi}{4}) = -1$

$\tan(-\frac{\pi}{3}) = -\sqrt{3} \approx -1,73$

$\tan(-\frac{\pi}{2})$ ~~is not defined~~

Ans [2]



$\Rightarrow -\frac{12}{5}\pi = -2\pi - \frac{2}{5}\pi$

